

### HINGED DOOR SYSTEM

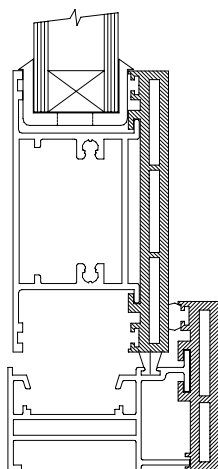
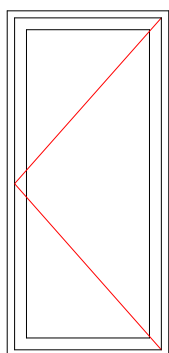
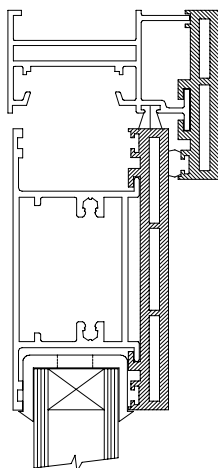
The AM Profiles' ALARCLAD system is composite in design, incorporating aluminium structural extrusions externally and hollow PVC-U extrusions internally. The aluminium and PVC-U are sleeved together to produce a permanent bond. The system combines the strength and rigidity of aluminium with the thermal performance of PVC-U and is ideal for dual colour projects.

#### INTERNAL

PVC-U internal box sections are 11.5mm deep and are extruded from high impact U.V. stabilised material, white as standard or wrapped with PVC-U veneers.

#### EXTERNAL

Aluminium extruded from alloy 6063 T6 in accordance with BS1474-1987. Polyester powder coated to BS 6496 - 1984 (full RAL and BS range available). Anodised to BS 3987 or wrapped with PVC-U veneers onto powder paint.



### SYSTEM DETAILS

The Alarclad hinged door is available in a wide range of styles including :-

- Single Door open in or out
- Double Door open in or out
- Side Panels & Fan Lights
- Midrail options

Weather-stripping with Schlegel "Q-Lon" compression seal and intermediate woolpile seal.

#### Furniture and fittings

Adjustable security hinges.

Choice of main locking device complete with hook bolt locking and latch facility or emergency exit hardware.

Range of security deadbolts with or without remote electric strike.

All gearing and locking systems are positively located into the aluminium eurogroove.

A range of colour coated letter-plates and handles.

Background Trickle Ventilation options.

#### GLAZING

Door sash glazing is with a wrap round gasket - single glazing can be used or double glazed units of 24mm overall. The wrap round door system gives a high degree of security as the units can only be removed by dismantling the door sash - this can only be done with the door in the open position.

#### PERFORMANCE

All ALARCLAD products are manufactured by trained and approved fabricators. Products have been independently tested and achieved the following results.

#### AIR INFILTRATION

Samples satisfied the requirements of BS6375: Part 1 - 1989, achieving the highest pressure class of 600Pa Class C.

#### WATER PENETRATION

Samples satisfied the requirements of BS6375: Part 1 - 1989, achieving a test pressure class of Severe.

#### WIND RESISTANCE

Samples achieved the requirements of BS6375: - Part 1 - 1989, achieving a test pressure class of Severe.

#### WHEELCHAIR ACCESS

Full range of low threshold ramps for all installation details.

Full test reports are available on request.

AM Profiles Ltd reserve the right to change designs and specification without prior notification.

*Drawing not to scale*