

**SERIES 900 SYSTEM**

The AM Profiles' ALARCLAD system is composite in design, incorporating aluminium structural extrusions externally and hollow PVC-U profiles internally. The aluminium and PVC-U are sleeved together to produce a permanent bond. The system combines the strength and rigidity of aluminium with the thermal performance of PVC-U and is ideal for dual colour projects.

**INTERNAL**

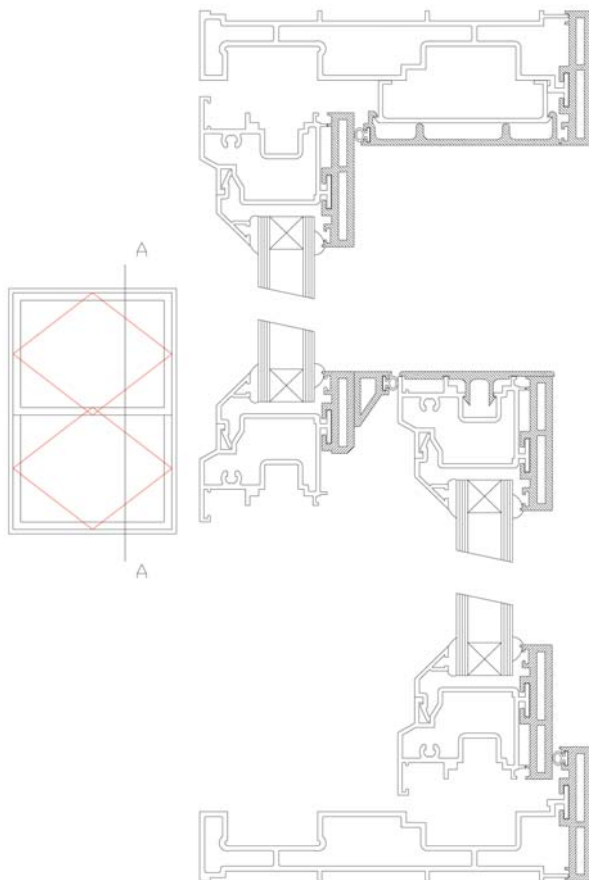
PVC-U internal box sections are 11.5mm deep and are extruded from high impact U.V. stabilised material, white as standard or wrapped with PVC-U veneers.

**EXTERNAL**

Aluminium extruded from alloy 6063 T6 in accordance with BS1474-1987. Polyester powder coated to BS 6496 - 1984 (Full RAL and BS Range available). Anodised to BS 3987 or wrapped with PVC-U veneers onto powder paint.

**GLAZING**

Single, double or triple glazed options in accordance with BS 6262 from 4mm - 28mm.

**SYSTEM DETAILS**

The ALARCLAD Stepped Top Swing window is available in a wide range of styles including :-

- Fully Reversible Top Swing
- Side Hung Open In
- Top Hung Open Out
- Fixed Panes

**Sight Lines**

With the top sash closing onto the lower sash the window has similar sight lines as a traditional sash and case. The centre mullion sight line is only 52mm.

Weather-stripping with Schlegel "Q-Lon".

**Furniture and fittings**

The Peder Nielsen Top Swing UNI Hinge incorporates a two-point safety restrictor, has powder coated tracks and yellow chromate arms with protective lacquer. Tested to BS 6375: Part 2: 1987.

Shootbolt or Espagnolette with a choice of colour coated and suited handles (locking or non locking).

Background Trickle ventilation options.

**SECURITY**

The glazing and hardware of the window has been independently tested to meet the PAS011 standard.

**PERFORMANCE**

All ALARCLAD windows are manufactured by trained and approved fabricators. Products have been independently tested and achieved the following results.

**AIR INFILTRATION**

Samples satisfied the requirements of BS6375: Part 1 - 1989, achieving the highest pressure class of 600Pa Class C.

**WATER PENETRATION**

Samples exceeded the requirements of BS6375: Part 1 - 1989.

**WIND RESISTANCE**

Samples achieved the requirements of BS6375: - Part 1 - 1989.

**FIRE ESCAPE**

The ALARCLAD Stepped Top Swing window allows for fire egress and easy clean within the same window.

Full test reports are available on request.

**ANCILLARY PROFILES**

Cills, Frame Extension and Couplings are available.

AM Profiles Ltd reserve the right to change designs and specification without prior notification.

*Drawing not to scale*