

SERIES 800 SYSTEM

The AM Profiles' ALARCLAD system is composite in design, incorporating aluminium structural extrusions externally and hollow PVC-U profiles internally. The aluminium and PVC-U are sleeved together to produce a permanent bond. The system combines the strength and rigidity of aluminium with the thermal performance of PVC-U and is ideal for dual colour projects.

INTERNAL

PVC-U internal box sections are 11.5mm deep and are extruded from high impact U.V. stabilised material, white as standard or wrapped with PVC-U veneers.

EXTERNAL

Aluminium extruded from alloy 6063 T6 in accordance with BS1474-1987. Polyester powder coated to BS 6496 - 1984 (Full RAL and BS Range available). Anodised to BS 3987 or wrapped with PVC-U veneers onto powder paint.

SYSTEM DETAILS

The Alarclad UNI window is available in a wide range of styles including :-

- Fully Reversible Top Swing
- Fully Reversible Side Swing
- Top or Side Hung Open Out
- Fixed Panes

Weather-stripping with Schlegel "Q-Lon".

Furniture and fittings

The Peder Nielsen Top Swing Uni Hinge incorporates a two point safety restrictor, has powder coated tracks and yellow chromate arms with protective lacquer.

Tested to BS 6375: Part 2: 1987.

Shootbolt or Espagnolette with a choice of colour coated and suited handles (locking or non locking).

Background Trickle ventilation options.

GLAZING

Single, double or triple glazed options in accordance with BS 6262 from 4mm - 28mm. External and internal glazing options available on fixed lights with Sashes reversible for ease of cleaning and re-glazing.

SECURITY

The glazing and hardware of the window has been independently tested to meet BS7950.

PERFORMANCE

All ALARCLAD windows are manufactured by trained and approved fabricators. Products have been independently tested and achieved the following results.

AIR INFILTRATION

Samples satisfied the requirements of BS6375: Part 1 - 1989, achieving the highest pressure class of 600Pa Class C.

WATER PENETRATION

Samples exceeded the requirements of BS6375: Part 1 - 1989.

WIND RESISTANCE

Samples achieved the requirements of BS6375: - Part 1 - 1989, achieving a test pressure class of 2400Pa.

FIRE ESCAPE

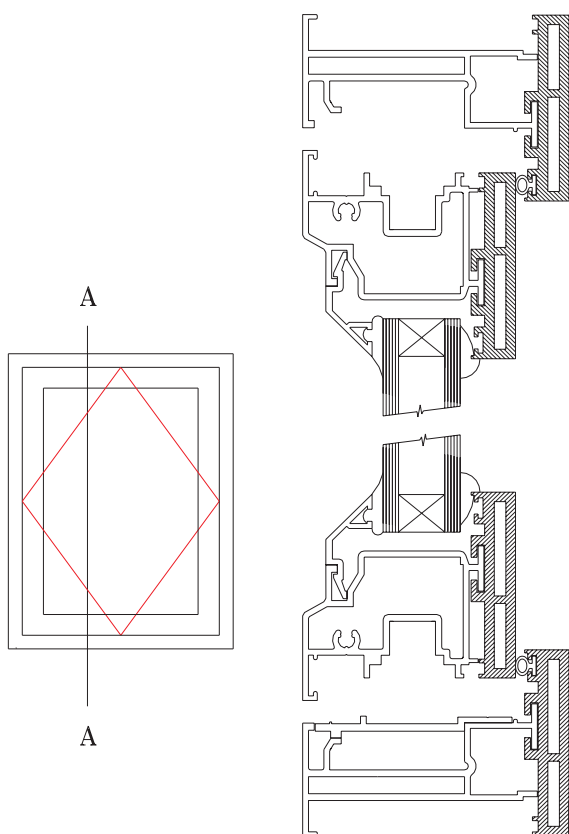
The ALARCLAD UNI window allows for fire egress and easy clean within the same window.

Full test reports are available on request.

ANCILLARY PROFILES

Cills, Frame Extension and Couplings are available

AM Profiles Ltd reserve the right to change designs and specification without prior notification.



Drawing not to scale